

# Everest Quick Guide: Adding the Everest RemoteApp on Macs

## How to setup Microsoft Remote Desktop for Everest RemoteApp on Macs

Updated: 10/19/2020

### How to add the Everest RemoteApp on a Mac

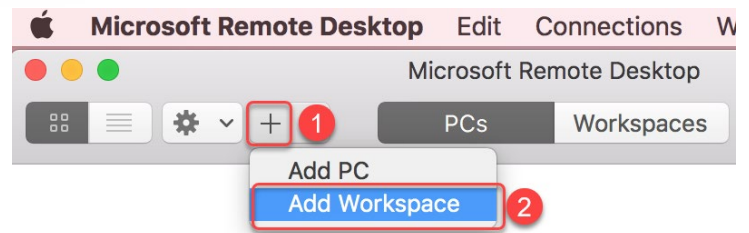
1. **Download + install** the Microsoft Remote Desktop application from your Mac App Store.



2. **Configure the Everest RemoteApp:**

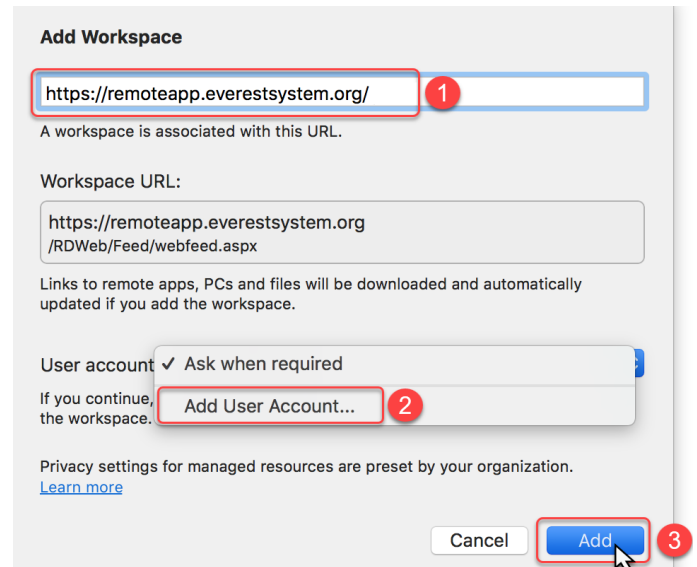
- a. **Open Microsoft Remote Desktop:**

- 1) Click the **+** (**plus sign**) button on the top.
- 2) Select **Add Workspace**.

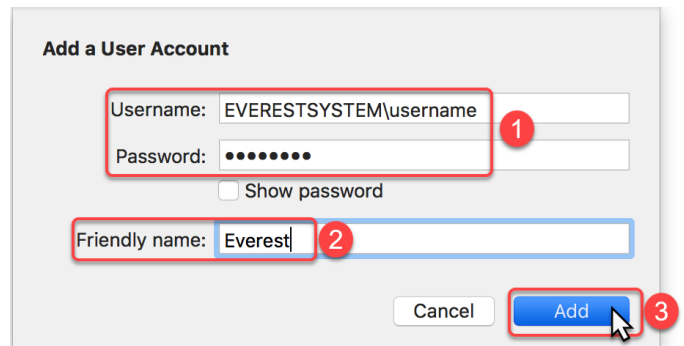


- b. The Add Workspace window will open:

- 1) **Copy + paste** the following URL into the box:  
[https://remoteapp.everestsystem.org](https://remoteapp.everestsystem.org/)
- 2) More options will open. For **User account:**  
Choose **Add User Account...**
- 3) Click **Add**.

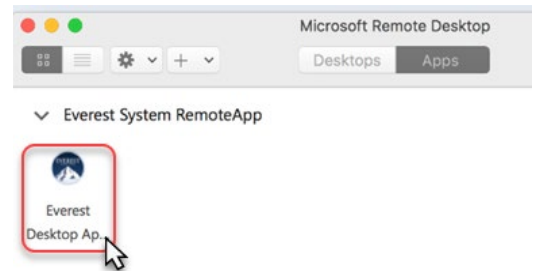


- c. The Add a User Account window will open:
- 1) Enter your **Everest Credentials** in the following format:
    - **User Name:** EVERESTSYSTEM\username
    - **Password:** enter your Everest password
  - 2) You can also specify a “**Friendly Name**” to save these credentials as (i.e. Everest).
  - 3) Select **Add**

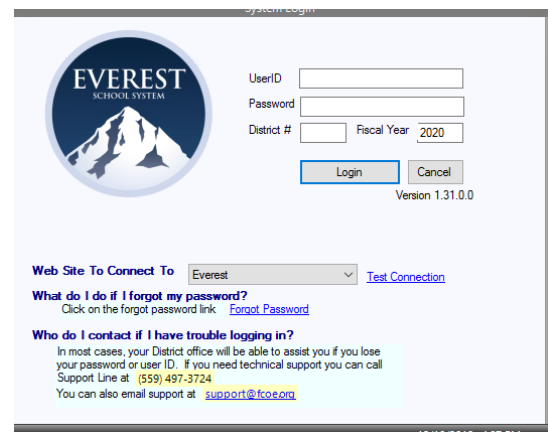


3. The **Everest System RemoteApp** applications should be added to Microsoft Remote Desktop application now.

- a. Double-click the **Everest Desktop Application** icon to launch it.



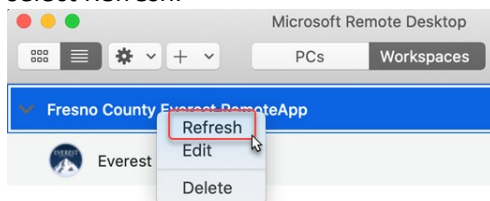
4. **Log in to Everest:** Enter your **Everest UserID, Password, District #** and confirm the **Fiscal Year** to log in.



## General FAQ

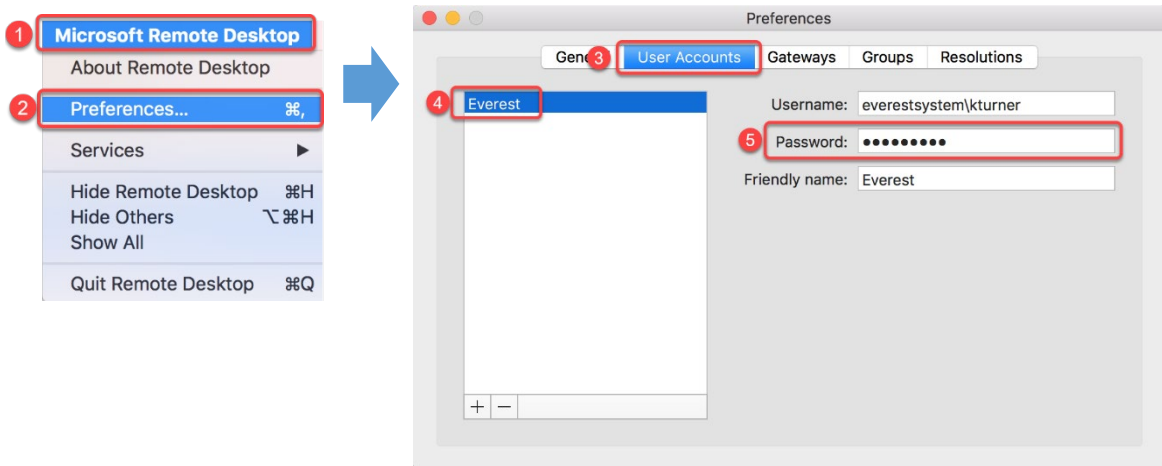
**Q. I’ve setup the Microsoft Remote Desktop on my Mac before, but I’m having trouble logging into Everest still on my MAC.**

- A. Open the Microsoft Remote Desktop app. In Workspaces, CTRL+Click on the Everest Workspace and select Refresh.



**Q. I recently changed my password and now it doesn’t work.**

- A. You can update your password easily. Here's how: With the app open, from the top menu, select **Microsoft Remote Desktop** > select **Preferences...** > select **User Accounts** > with the Everest connection selected, re-enter your password in the **Password** field > close out window. It will save your changes upon closing.



#### Questions or Everest issues to report?

Please contact the Support Desk at [support@fcoe.org](mailto:support@fcoe.org).